

Wood Warm Wight Apartment

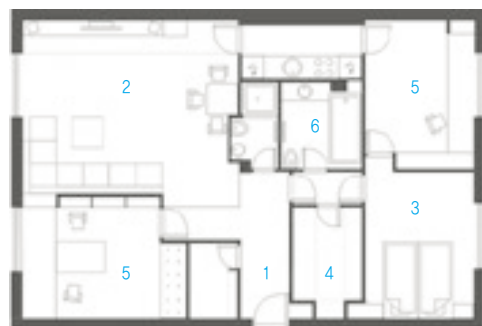
디자인 피터 코스텔로브 위치 러시아 모스크바 용도 하우스
면적 86㎡ 바닥 금속, 우드, 유리, 석재 벽 금속, 우드, 유리,
스테인드 천장 금속, 우드, 유리 사진 지논 라주치노브

Design Peter Kostelov(www.kostelov.ru) Location
Moscow, Russia Use House Area 86㎡ Floor Metal,
Wood, Glass, Stone Wall Metal, Wood, Glass, Stucco
Ceiling Metal, Wood, Glass Photo Zinon Razutdinov



아파트의 기존 공간 구성은 그대로 유지하고 금속 프레임 안을 메우는 돌, 나무, 섬유, 코르크 등의 자재들을 사용해 차가운 공간이 따뜻하고 아늑한 공간으로 탈바꿈 됐다. 그레이 베이지 톤의 벽면과 커튼, 쿠션 등의 요소가 이러한 변화를 뒷받침해준다. 금속 뼈대가 공간 전체로 뻗어있어 그것이 가구가 되고, 또한 소품이 된다. 금속과 나무의 질감 결합이 어둠과 밝음의 대조적 이미지를 공간에 표현한다. **Editor** Lim Bomi





- 1. Entrance
- 2. Living Room
- 3. Bed Room
- 4. Dress Room
- 5. Room
- 6. Bath Room





The apartment plan stayed the same, as well as carcass of all metal frames, which form walls, partitions and items of furniture. As for filling between frames which initially was metal plates now replaced by white toned wood. Steel carcass ran through the apartment performing such functions as planning, dividing the space, creating the elements of furniture and items of interior. While shape-generating are still metal frames filling is just an accessory. Theoretically filling inside frames could be of any material: stone, wood, cork, even textile. Yet working with metal was extremely interesting at that moment as it

seemed almost impossible to apply this material for interior of a living space. In fact it was primary task: keeping all basic characteristics: design, walls and partitions lay-out on the assumption of minimum efforts and expenses to make possible changes from brutal and industrial look to warm and cozy living space. Surely warm grayish-beige colors of walls and other elements of decor-cushions, curtains, and bedspread also supported this change for WWW apartment. 'Dark and Light' graphics created new design and concept, while metal and wood combination point to contrast of materials and texture.